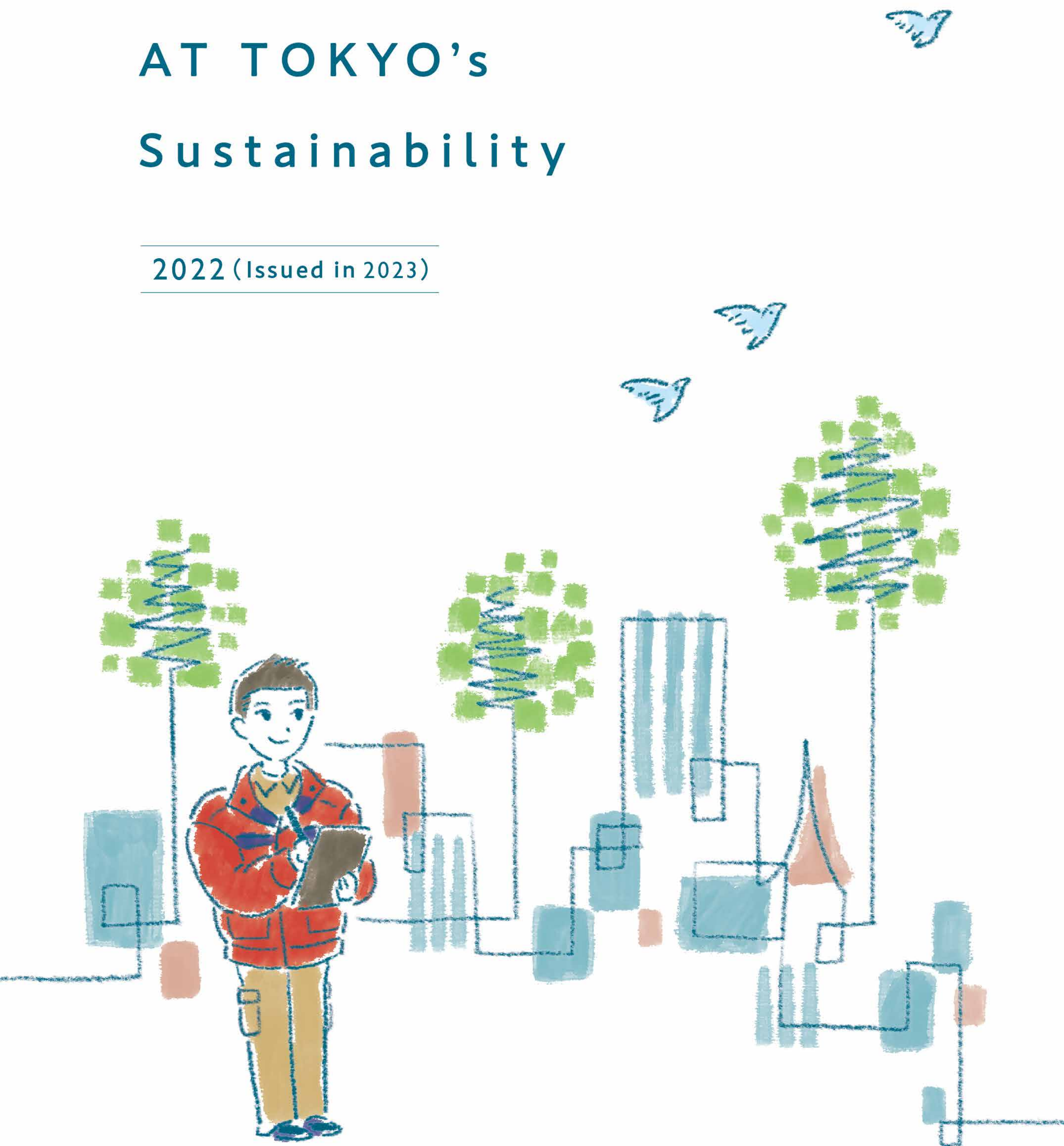


# AT TOKYO's Sustainability

2022 (Issued in 2023)

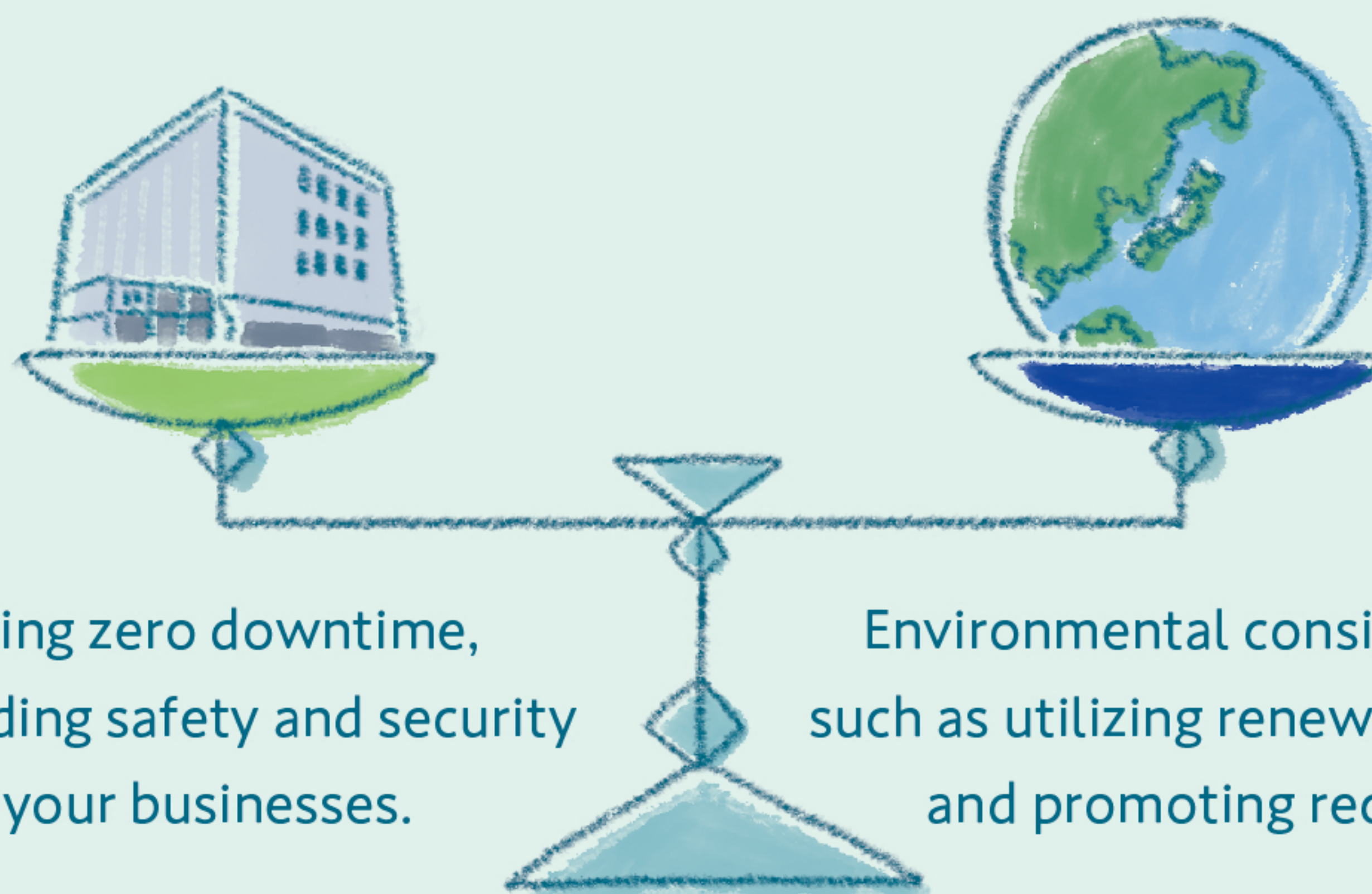




# Eco-friendly while Providing Peace of Mind

We, AT TOKYO data centers, promise safety and security for your business, maintaining high-level service and zero-downtime operation.

We remain highly conscious of the environment, even as we consume large amounts of energy and operate various facilities every day.



AT TOKYO aims to provide environmentally friendly data centers.



## For Its Measures Against Global Warming, DC3 Receives Renewed Certification as Top-Level Facilities

The Tokyo Metropolitan Government certifies business facilities that take particularly outstanding global warming countermeasures as Top-Level facilities.

AT TOKYO Data Center #3 (DC3) acquired this certification in FY2017, and received it again during its renewal this year. As a result of the promotion of its various energy-saving initiatives, such as server room operation and equipment renewals, it was recertified that DC3 meets the standards specified by the governor of Tokyo as a facility that has made outstanding progress in its implementation of measures against global warming.

AT TOKYO will continue to ensure the implementation of energy-saving measures while maintaining daily operations with zero downtime.



AT TOKYO staff involved in Top-Level Facilities certification



## Reducing Water Consumption by Promoting the Reuse of Cooling Water

Data centers consume large amounts of energy. This is why it is important that we continuously strive to implement as many energy-saving measures as possible. One of our many achievements in this area is the reduction of the amount of cooling water that is used to

counter the heat generated in the server rooms. In FY2022, AT TOKYO successfully reused a total of 16,645 m<sup>3</sup> (43.2%) of cooling water (boiler blow-down water) that would otherwise have been disposed of.

### Blow-down Water Reuse Rate during 2022

	April to June	July to September	October to December	January to March
Blow-down Water	7,388m <sup>3</sup>	11,298m <sup>3</sup>	10,397m <sup>3</sup>	9,952m <sup>3</sup>
Reused Water	3,795m <sup>3</sup>	4,824m <sup>3</sup>	4,359m <sup>3</sup>	3,667m <sup>3</sup>
Reuse Rate	51.4%	42.7%	41.9%	36.8%

Total 16,645m<sup>3</sup>

Average 43.2%



## A New Decarbonization Service — The Customer Sustainability Support Program

As of October 2022, AT TOKYO began offering a service that adopts renewable energy sources that have a specific value for the environment as part of the company's on-going efforts for decarbonization.

The Customer Sustainability Support Program provides electricity with zero carbon dioxide emissions by combining the electricity that customers utilize at data centers\* with the environmental value of renewable energy.

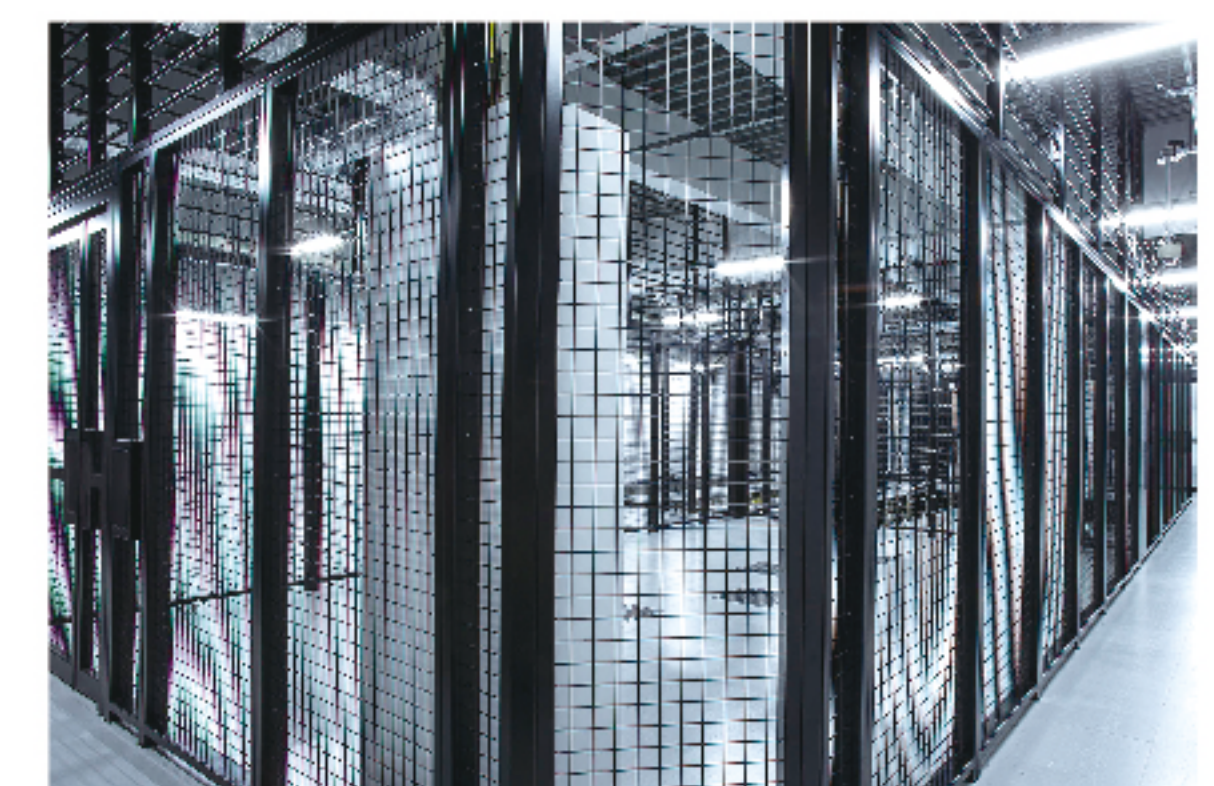
Furthermore, from April 2023, the electricity used for our data centers' housing and premium rack colocation services was changed to be virtually 100% from

renewable energy sources. We will continue to develop services that achieve decarbonization.

\*This service is available for the CC1's, CC2's, DC2's, and DC3's colocation services, as well as caged colocation services.



Server racks



Caged colocation service

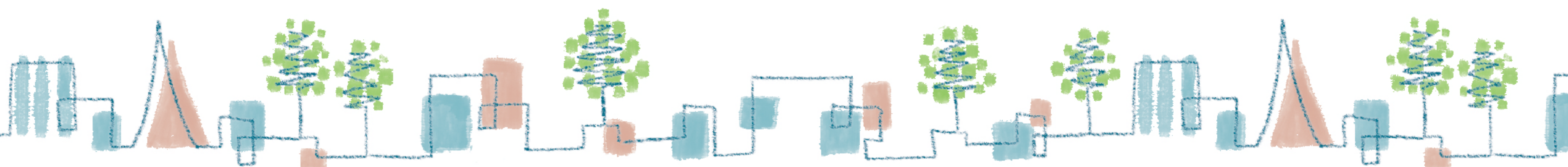
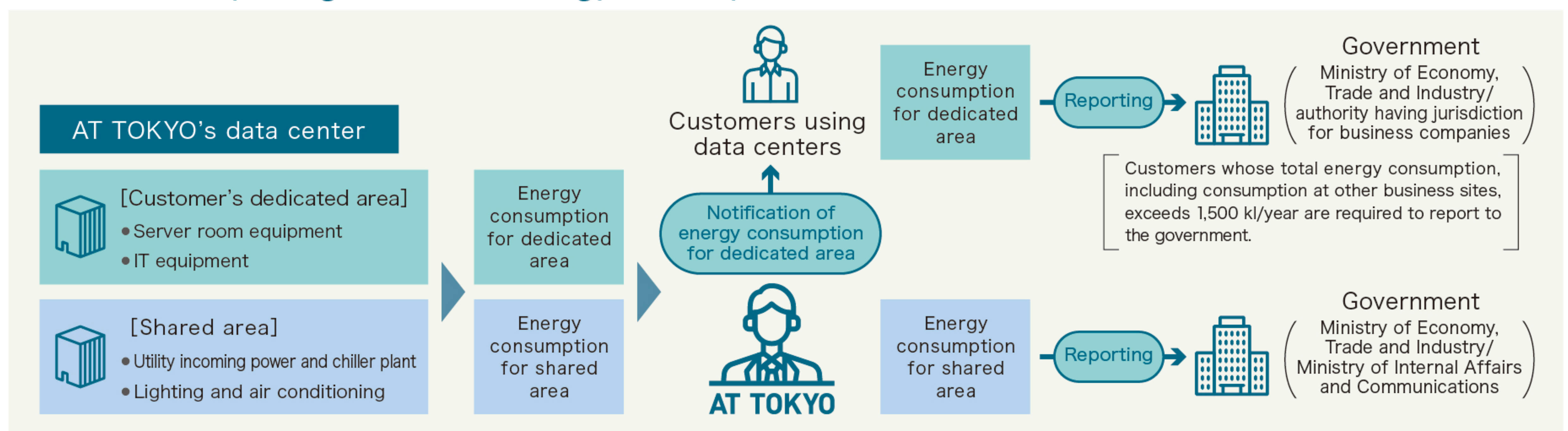
## Compliance with Revisions to the Energy Conservation Law (FY2022)

Previously, data center companies reported the energy consumption of data centers at regular intervals under the Energy Conservation Act. However, the revision of the Energy Conservation Act (FY2022) requires customers to report the energy consumption of IT equipment and surrounding appliances, such as air conditioning and lighting that are used in server spaces (excluding housing spaces), as well as the consumption at their

offices, as their own energy consumption.

In preparation for this revision, AT TOKYO has long been developing an in-house system that allows energy consumption to be aggregated on a customer-by-customer basis. As a result, we were able to smoothly report individual customer energy consumption for FY2022 in May, prior to the regular reporting in July.

### Renewed the reporting method for energy consumption





# INTERVIEW

## Behind the scenes in AT TOKYO's environmentally friendly data centers

AT TOKYO realizes 24/365 zero downtime operation as a leading data center colocation service company, providing carrier-neutral, flexible connections. So, what does sustainability mean to AT TOKYO? Here, we introduce the voices of AT TOKYO members who are making consistent and forthright efforts toward achieving a carbon-free society through what we can do as data centers.

### For Highly Efficient Operation of Data Centers in Consideration of Energy-Saving and Environmental Challenges

AT TOKYO, as a data center company, consumes enormous amounts of energy every day. Therefore, we know we must put a great deal of effort into cutting energy consumption and making a more positive impact on the environment. In FY2022, AT TOKYO's DC3 renewed its certification as a Top-Level facility granted by the Tokyo Metropolitan Government as a business location that is outstanding in its application of initiatives against global warming. Our sincere and steady commitment to reducing our energy

consumption continued throughout the COVID-19 pandemic. We believe this renewal was realized successfully because our team maintained close and efficient communication even while working remotely and in shifts, as preparation to receive such a certification. AT TOKYO will continue to work with customers to operate even more highly efficient data centers in the future.

**Shingo Sakamoto**, Data Center #3, Engineering & Services Division



### Sincerely Facing Environmental Challenges to Achieve a Sustainable Decarbonized Society

With the increasing significance of environmental responsibilities, all of us at AT TOKYO consider that it is imperative for us as a data center company, as well as for other corporations, to take serious measures in order to realize a sustainable, decarbonized society. In October 2022, we began offering the Customer Sustainability Support Program — which incorporates the environmental values of renewable energy. Since

its introduction, various customer corporations have already started utilizing this service. AT TOKYO is committed to providing high-quality, reliable data center services while fulfilling its social responsibilities by actively addressing various environmental challenges.

**Koya Ono**, Customer Service Dept., Engineering & Services Division



### Creating a Healthy and Safe Working Environment Through Continuous Improvements of Occupational Health and Safety

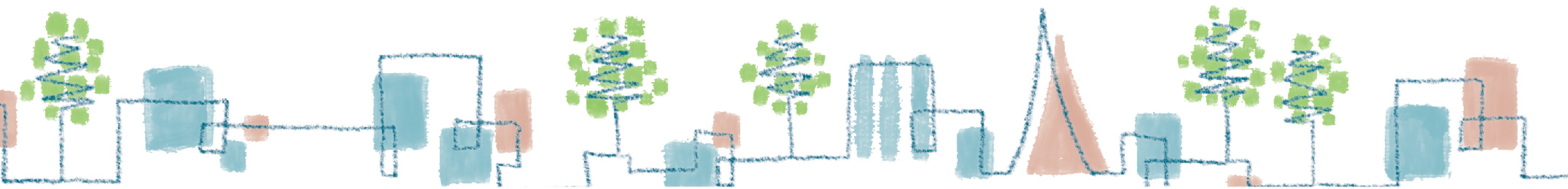
For a data center company to achieve round-the-clock operation with zero downtime, it is crucial to also safeguard both the physical and mental health of all AT TOKYO employees. Therefore, we believe it is essential to continuously improve environmental and occupational health and safety from a long-term global perspective. AT TOKYO has built a management system that complies

with ISO 45001 (Occupational health and safety management systems) and it has commenced operation. We will continue to promote a positive work environment and deliver data center services while ensuring the utmost safety and security.

**Kiminori Kobayashi**, General Manager, Sustainability Dept., Strategic Planning Office



**AT TOKYO will continue to maintain its high awareness of energy conservation and the environment, aiming to enhance the convenience of its customers from diverse industries, while constantly striving to be the most highly evaluated data centers for each and every customer.**



AT TOKYO Corporation <https://www.attokyo.co.jp/>  
5-6-36 Toyosu, Koto-ku, Tokyo, Japan TEL:03-6372-3500 FAX:03-6372-3009 Mail:at-sales@attokyo.co.jp

